

Belvidere Park District

NOTICE OF BID

1. Sealed bids for installing playground equipment, removal of existing equipment, and other site work for Belvidere Park District, will be received until 10:00 A.M. on January 31st, 2023, at which time they will be publicly opened and read aloud. Bid should be addressed to Jonathan Cudzewicz , Belvidere Park District 1006 W Lincoln Ave Belvidere , IL 61008

Any bids received after this date and time will be returned unopened.

I. Instructions to Bidders

1. Bids shall be submitted in a sealed envelope and clearly marked:

SEALED BID

DOTY PLAYGROUND EQUIPMENT INSTALLATION

2. The successful bidder will be selected based on the District's evaluation of each bidder, reference checks, and the final approval by the Park District Board of Commissioners.

The Park District reserves the right to reject any or all bids and to waive informalities to serve the best interest of the Park District. Such decisions shall be final and not subject to recourse.

3. No bids may be withdrawn after the official opening. All bids submitted must be valid for a minimum period of sixty (90) days after the date set for the bid opening.

4. Bidder's signature on the Bid Offer Form will be construed as acceptance of and willingness to comply with all provisions of the acts of the General Assembly of the State of Illinois relating to wages of laborers, sexual harassment, drug free workplace, preference to citizens of the United States and residents of the State of Illinois, and discrimination and intimidation of employees. Provisions of said acts are hereby incorporated by reference and become a part of this proposal and specification.
5. The Park District is not subject to Sales Tax, Federal Excise Tax, or Illinois Retailers Occupational Tax.
6. All play equipment and all play equipment components will be purchased from NuToys Leisure Products and provided to the contractor by the Park District.

II. **Scope of Work** The following tasks are included in the **base bid**:

1. Install new Landscape Structures playground equipment for Doty Park in strict accordance with the attached specifications and plans. Equipment provided by owner. Please note the Lunar Blast and the Global motion shown on the plan and 3D are existing equipment and not to be disturbed.
2. Remove existing 2 bay arch bay swing, and reinstall with an additional bay in the location noted on the drawing.
3. Contractor shall exercise care so as not to damage existing grass, walks, or other Park District property during the performance of its contract. Contractor shall repair or replace any damaged grass or material, should damage occur during construction. The Contractor shall be responsible for removing and disposing all debris and packing material from the job site.
4. Supplier shall inspect playground equipment after completion of installation and shall notify the Park District of any installation errors or omissions. The certification letter shall state that there are no installation errors if none are found.

The following tasks are to be proposed as **alternate item**:

1. Remove existing 109 lineal feet of existing concrete curbing
Supply and install 303 lineal feet of concrete curb 8'' x 18'' per the drawing below.
2. Supply and install an additional 160 cubic yards of certified playground mulch.

III. **Insurance**

The Contractor shall carry Liability Insurance with a minimum coverage of \$1,000,000.00 including Umbrella covering in the following categories:

Personal Injury
Property Damage
Vehicles
Completed Operations

The Contractor shall also be covered by Workman's Compensation Insurance that meets Illinois limits.

Manufacturers of playground equipment shall carry Product Liability insurance with limits of no less than \$10 million, including umbrella policy.

Certificates of Insurance showing such coverage shall be furnished with the bid.

IV. **Safety**

Contractor shall fence in the area during construction to prevent citizen use during construction.

V. **References**

Contractor shall list the names, addresses, and phone numbers of at least five (5) references where work of a similar nature and scope has been performed.

VI. **Completion Date**

Project shall be completed as soon as possible but no later than **May 19th, 2023**.

VII. Payment

The Owner shall make final payment within thirty (30) days after completion and acceptance of the work. **No payment will be made to the Contractor until final waivers of lien have been submitted, assuring the Park District that all materials, including play equipment and concrete used on this project, have been fully paid for.**

VII. Equipment List

2 177333A arch Swing Frame Additional Bay 8' Beam

DOTY PARK
 BELVIDERE, IL
 OPTION 1
 PLAYBOOSTER

<u>QTY.</u>	<u>NO.</u>	<u>DESCRIPTION</u>	<u>UNIT PRICE</u>
PlayBooster Component System 5-12			
1	172666B	Corkscrew Climber w/Recycled Wood-Grain Handholds 72"Dk DB	
1	271906A	Wood Plank Ladder w/Wood-Grain Handholds 72" Deck DB	
1	146812A	Sky Rail Climber 72"Dk DB ¹	
1	152907D	Deck Link w/Barriers Steel end panels 4 Steps	
2	CP000151A	DTR PB Playodyssey 41i Tall Wire Mesh Upper Barrier	\$ 2,116
1	CP000149A	DTR PB Playodyssey Treehouse Corrugated Steel Roof	
1	CP000148A	DTR PB Playodyssey Treehouse Tower	
1	152911A	Curved Transfer Module Left 32"Dk DB	
1	111231A	Triangular Tenderdeck	
2	116244A	Pipe Barrier Above Deck	761
1	169319A	Recycled Wood-Grain Lumber Panel	
3	120314A	Wire Barrier Above Deck	835
2	165824A	12' Tower Bubble Panel	1,901
2	165960A	12' Tower Pipe Barrier	1,381
1	165780B	12' Tower SlideWinder2 w/Barrier	
1	222710B	12' Tower WhooshWinder Slide w/Barrier	
1	118089A	Loop Seat	
1	111404F	108"Alum Post DB	
2	111404E	116"Alum Post DB	373
1	271761A	Alpine Slide 72" Deck DB ¹	
1	182503C	Welcome Sign (LSI Provided) Ages 5-12 years Direct Bury	
SUBTOTAL			

PlayBooster Component System 2-5

1	145839A	Critter Canyon DB		
1	CP000184A	DTR PB Bee Pipe Barrier Above Deck		
3	121948A	Kick Plate 8"Rise	\$	142
3	111228A	Square Tenderdeck		1,250
1	185852A	Transfer Step w/2 Handloops DB		
1	111231A	Triangular Tenderdeck		
1	115236A	Ball Maze Panel Above Deck		
1	217909A	DigiFuse Barrier Panel Above Deck Insects-Bee Anatomy/Critters - 000000006		
1	116244B	Pipe Barrier w/Wheel Above Deck		
1	115254A	Storefront Panel		
1	120901A	Grab Bar		
1	111404G	100"Alum Post DB		
2	111404F	108"Alum Post DB		
1	111403T	110"Steel Post For Roof DB		
2	111404E	116"Alum Post DB		
2	111403R	126"Steel Post For Roof DB		
1	111404H	92"Alum Post DB		
3	212256A	Flower Accent Topper		
1	123337A	Single Slide 40"Dk DB		
1	129042B	Offset Crawl Tunnel 24"Offset Deck To Ground		
1	111331A	Tunnel Support 8"Dk w/Alum Posts DB		
1	182503A	Welcome Sign (LSI Provided) Ages 2-5 years Direct Bury		



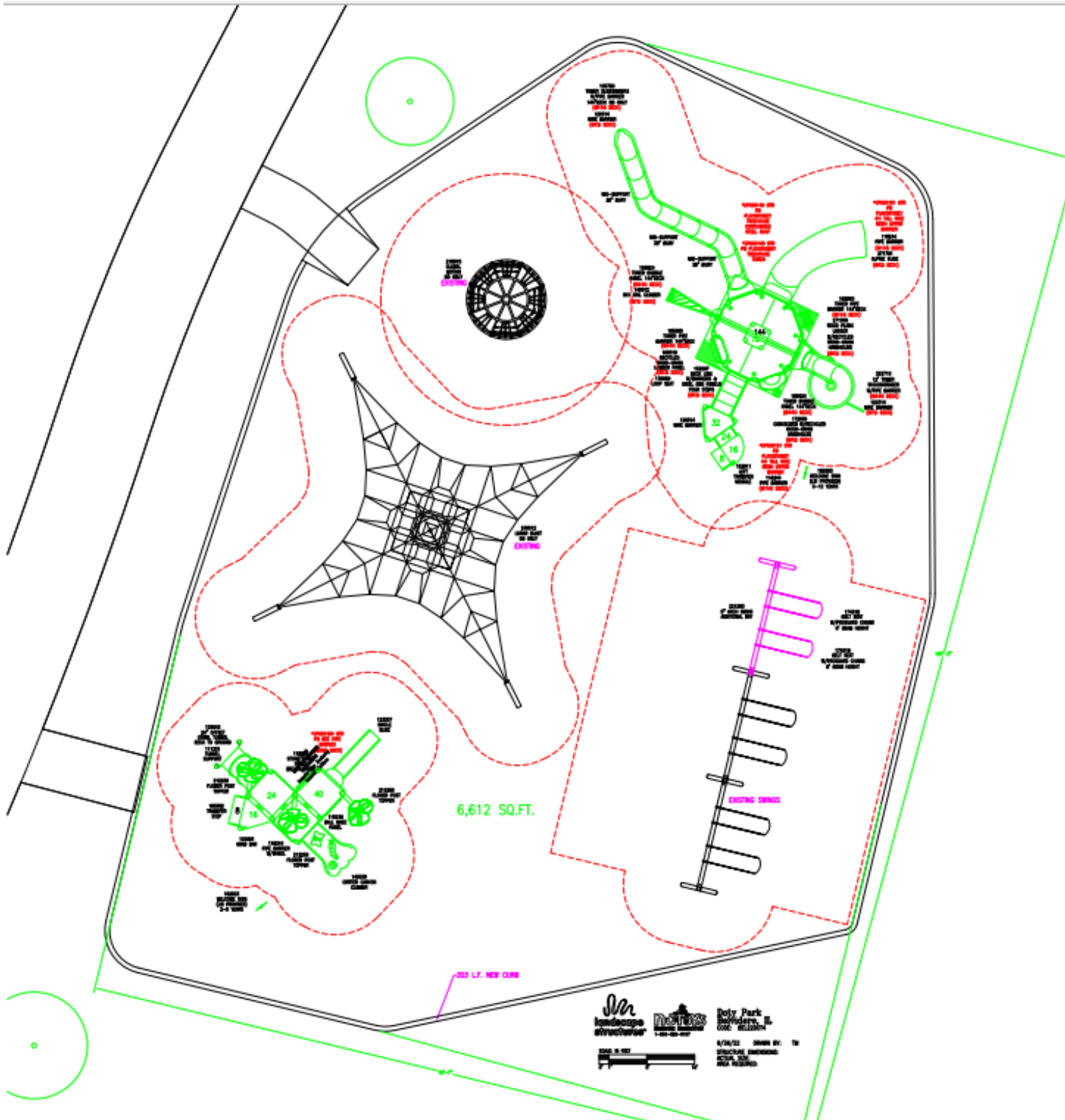
lsr
landscape
structures

Doty Park

BEL22DOT4-1-1 • 09.26.2022

nJOYS
Leisure Products

©2022 Landscape Structures. All Rights Reserved.



6,612 SQ.FT.

NEW L.T. NEW CLONE

Poly Park
 4/24/22 DRAWN BY: [unintelligible]
 CHECKED BY: [unintelligible]



VIII. Equipment Specifications

PLAYGROUND EQUIPMENT

PART 1 - GENERAL

1.1 SUMMARY

Section includes playground equipment and associated signage. Furnish all labor and materials and equipment required to install the play equipment as indicated on the drawings or specified herein. The work shall include any incidentals to provide a finished job.

DEFINITIONS

Use Zone: According to ASTM F1487, the “area beneath and immediately adjacent to a play structure or equipment that is designed for unrestricted circulation around the equipment and on whose surface it is predicted that a user would land when falling from or exiting the equipment.”

IPEMA: International Play Equipment Manufacturers Association.

Fall Height: According to ASTM F 1487, “the vertical distance between a designated play surface and the protective surfacing beneath it.”

DESIGN REQUIREMENTS

Compliance with current guidelines, standards, laws and building codes for safety and accessibility:
ASTM F1487-11 – Standard Consumer Safety Performance Specifications for Playgrounds for Public Use.
U.S. Consumer Products Safety Commission (CPSC) Guidelines (No. 325)– Handbook for Public Playground Safety
ADA Accessibility Guidelines (ADAAG) Section 15.6 Play Areas
Chicago Building Code: Chapter 18-11-1115 Play Areas

Site specificity of design – Equipment design/component selection is based on specific needs of the school/district, physical constraints of the site, and public input. Design requirements include:

- Play value
- Capacity
- Footprint
- Color availability
- Visual density and appearance
- Age appropriateness
- Height/Size
- Sensory stimulation
- Accessibility/usability for those with special needs.

Products selected are durable and proven to withstand very high use environment.

PERFORMANCE REQUIREMENTS

Structural Performance Requirements:

Aluminum Posts: All Aluminum PlayBooster posts are manufactured from 5" O.D. tubing with a wall thickness of .120" and shall be galvanized after rolling and shall have both the I.D. and the cut ends sprayed with a corrosion resistant coating.

Steel Post Mechanical Properties:

- Yield Strength (min): 50,000 PSI
- Tensile Strength (min): 55,000 PSI
- Elongation: 25% in 2 inches
- Modulus of Elasticity: 29.5 x 106 PSI

Clamps: All clamps are ProShield finished and, unless otherwise noted, shall be die cast using a 369.1 aluminum alloy and have the following mechanical properties:

- Ultimate Tensile: 47,000 PSI
- Yield Strength: 28,000 PSI
- Elongation: 7% in 2 inches
- Shear Strength: 29,000 PSI
- Endurance Limit: 20,000 PSI

Each functional clamp assembly shall have an appropriate number of half clamps and shall be fastened to mating parts with (2) 3/8" x 1 1/8" pinned button head cap screws (SST) and (2) stainless-steel (SST) recessed "T" nuts. A 1/4" aluminum drive rivet with stainless steel pin is used to ensure a secure fit to the post. Clamps should allow for future maintenance/adjustment without effecting integrity of the posts.

SUBMITTALS

Product Data: For each type of product indicated.

LEED Submittals:

Percentage of recycled materials used.

Percentage of post-consumer recycled materials used.

Shop Drawings: For playground equipment and structures. Include plans, color renderings, elevations, and installation details.

Samples: Provide color charts. Provide material samples upon request or as required.

Qualifications: For qualified installer, manufacturer, and testing agency.

Test Reports: Provide evidence of IPEMA certification for playground products.

Certifications:

Manufacturer is ISO 9001:2008 certified (quality assurance processes)

Manufacturer is ISO 14001:2004 certified (environmentally responsible processes)

IPEMA (International Play Equipment Manufacturers Association) third party certification for conformance to ASTM F1487.

Statement from manufacturer that products meet current safety and accessibility requirements.

Closeout Submittals:

Maintenance Kit: An order-specific maintenance kit shall be provided for each structure order. The kit will include a notebook or packet with a second set of installation documents and order-specific maintenance documentation with recommendations on how often to inspect, what to look for and what to do to keep the equipment in like-new condition. The kit also includes touch-up primer,

appropriate color touch-up paint, sandpaper, appropriate color touch-up PVC, graffiti remover and additional installation tools for the tamperproof fasteners.

Warranty Information.

Statement from manufacturer's representative identifying that installation has been performed in accordance with installation instructions.

QUALITY ASSURANCE

Manufacturer Qualifications:

Manufacturer is ISO 9001:2008 certified (quality assurance processes)

Manufacturer is ISO 14001:2004 certified (environmentally responsible processes)

Standard products are IPEMA (International Play Equipment Manufacturers Association) third party certified for conformance to ASTM F1487.

Installer Qualifications: The Contractor installing the equipment must be experienced in the installation of play equipment with personnel, facilities, and equipment adequate for the work specified and shall, within 48 hours of a request, produce written proof of such.

Sample Installations: Contractor shall upon request produce a list of at least 20 other projects where similar work, from same manufacturer, has been performed and could be reviewed.

Pre-installation Conference: Conduct conference at Project site to comply with requirements in Division 01 Section "Project Management and Coordination." Prior to the start of the playground equipment installation work, coordinate a conference at the Site to review the construction schedule, availability of materials, installers personnel qualifications, equipment and facilities needed to make progress and avoid delays, installation procedures, testing, inspecting, and certification procedures, and coordination with other work. Meeting shall include the Contractor, Board Authorized Representative, Architect, installer, and any other subcontractors or material technical service representatives whose work, or products, must be coordinated with the playground equipment installation work.

DELIVERY, STORAGE, AND HANDLING

Packaging: PlayBooster posts shall be individually packaged in sturdy, water-resistant, mar-resistant cardboard boxes. Other components shall be individually wrapped or bulk wrapped to provide protection during shipment. Small parts and hardware packages will be placed in crates for shipment. The components and crates are then shrink wrapped to skids (pallets) to ensure secure shipping.

Delivery: Equipment will be on delivered F.O.B. curbside. Installer will be responsible for unloading, storage, and security of the equipment until accepted by the owner.

Packing List: All shipments shall include a packing list for each skid/container, specifying the part numbers and quantities on each skid or within each container.

WARRANTY

100-Year Limited Warranty for all aluminum posts, stainless steel fasteners, clamps, beams and caps, against structural failure due to corrosion/natural deterioration or manufacturing defects. This warranty does not include any cosmetic issues or wear and tear from normal use.

15-Year Limited Warranty for all plastic and steel components against structural failure due to corrosion/natural deterioration or manufacturing defects. This warranty does not include any cosmetic issues or wear and tear from normal use.

15-Year Limited Warranty for TenderTuff coating against structural failure due to natural deterioration or manufacturing defects. This warranty does not include any cosmetic issues or wear and tear from normal use.

8-Year Limited Warranty On Aeronet® climbers and climbing cables against defects in materials or manufacturing defects.

3-Year Limited Warranty for all other parts, including CableCore Products, Swing seats and hangers; Trackride trolleys and bumpers; all rocking equipment, etc. against failure due to corrosion/natural deterioration or manufacturing defects. This warranty does not include any cosmetic issues or wear and tear from normal use.

PRODUCTS

MANUFACTURERS

Manufacturers:

Landscape Structures, 601 7th Street South, Delano, MN 55328. Locally represented by NuToys Leisure Products, 915 Hillgrove, LaGrange, IL 60525, (708)579-9055 or (800) 526-6197.

PRODUCTS

Basis-of-Design Product: The Drawings and Specifications are based on Landscape Structures, PlayBooster System.

MATERIALS:

All materials shall be structurally sound and suitable for safe play. Durability shall be ensured on all steel parts by the use of time-tested coatings such as zinc plating, galvanizing, ProShield® finish, TenderTuff™ coating, etc. Colors shall be specified.

Fasteners: Primary fasteners shall be socketed and pinned tamperproof in design, stainless-steel (SST) per ASTM F 879 unless otherwise indicated (see specific product installation/specifications). All primary fasteners shall include a locking patch type material that will meet the minimum torque requirements of IFI-125. Manufacturer to provide special tools for pinned tamperproof fasteners.

Decks: All decks shall be of modular design and have 5/16" diameter holes on the standing surface. There shall be minimum of (4) slots in each face to accommodate face mounting of components. Decks shall be manufactured from a single piece of low carbon 12 GA (.105") sheet steel conforming to ASTM specification A-1011. The sheet shall be perforated with a return flange on the perimeter to provide the reinforcement necessary to ensure structural integrity. There shall be no unsupported area larger than 3.5 square feet. The unit shall then be TenderTuff-coated brown or gray only. Decks shall be designed so that all sides are flush with the outside edge of the supporting posts.

Rotationally Molded Polyethylene Parts: These parts shall be molded using prime compounded linear low-density polyethylene with a tensile strength of 2500 psi per ASTM D638 and with color and UV-stabilizing additives. Wall thickness varies by product from .187" (3/16") to .312" (5/16"). Eleven standard colors available.

Permalene® Parts: These parts shall be manufactured from 3/4" high-density polyethylene that has been specially formulated for optimum UV stability and color retention. Products shall meet or exceed

density of .960 G/cc per ASTM D1505, tensile strength of 2400 PSI per ASTM D638. Five standard solid colors are available. Some Permalene parts are available in a two-color product with (2) .100" thick exterior layers over a .550" interior core of a contrasting color. Eight standard two-color options available.

Recycled Permalene Parts: These parts shall be manufactured from 3/4" high-density polyethylene that has been specially formulated for optimum UV stability and color retention. Products shall meet or exceed density of .960 G/cc per ASTM D1505, tensile strength of 2400 PSI per ASTM D638. Available in a three-layer product with (2) .100" thick colored exterior layers over a .550" thick 100% recycled Black interior core. Eleven standard color options available.

Hardware Packages: All shipments shall include individual component-specific hardware packages. Each hardware package shall be labeled with the part number, description, a component diagram showing the appropriate component, package weight, a bar code linking the hardware package to the job number, assembler's name, date and time the package was assembled, work center number, and work order number.

Installation Documentation: All shipments shall include a notebook or packet of order-specific, step-by-step instructions for assembly of each component, including equipment assembly diagrams, estimated hours for assembly, footing dimensions, concrete quantity for direct bury components, fall height information, area required information and detailed material specifications.

FINISHES

TenderTuff Coating: Metal components to be TenderTuff-coated shall be thoroughly cleaned in a hot phosphatizing pressure washer, then primed with a water-based thermosetting solution. Primed parts shall be preheated prior to dipping in UV stabilized, liquid polyvinyl chloride (PVC), then salt cured at approximately 400 degrees. The finished coating shall be approximately .080" thick at an 85 durometer with a minimum tensile strength of 1700 psi and a minimum tear strength of 250 lbs/inch. Five standard colors available, all with a matte finish.

ProShield Finish: All metal components with ProShield finish shall be thoroughly cleaned and phosphatized through a five-stage power washer. Parts are then thoroughly dried, preheated and processed through a set of automatic powder spray guns where a minimum .002" of epoxy primer is applied. A minimum .004" of architectural-grade Super Durable polyester TGIC powder is applied. The average ProShield film thickness is .006".

ProShield is formulated and tested per the following ASTM standards. Each color must meet or exceed the ratings listed below:

- Hardness (D3363) rating 2H
- Flexibility (D522) pass 1/8" mandrel
- Impact (D2794) rating minimum 80 inch-pounds
- Salt Fog Resistance (B117 and D1654) 4,000 hours and rating 6 or greater
- UV Exposure (G154, 340 bulb) 3,000 hours, rating delta E of 2, and 90 percent gloss retention
- Adhesion (D3359, Method B) rating 5B

The Paint Line shall employ a "checkered" adhesion test daily.

Twenty-six standard colors available.

EXECUTION

EXAMINATION

Examine the area and conditions of the site. Verify safety zones of all equipment before setting posts in concrete footing.

Proceed with installation only after unsatisfactory conditions have been corrected.

PREPARATION

Verify that all equipment needed for installation has been sent correctly.

INSTALLATION:

Conform strictly to manufacturer's instructions. Use only experience personnel trained in play equipment installation.

Provide all concrete footings as required. It is the contractor's responsibility to adjust drainage pipe or other new utility locations to accommodate the equipment footings.

FIELD QUALITY CONTROL

Contractor shall contact manufacturer's representative to review playground installation for accuracy.

Contractor shall notify Architect to review installation for review of overall conformance to specifications and workmanship.

ADJUSTING

Ensure that adjustments required by inspections are corrected to owner's satisfaction.

CLEANING AND PROTECTION

Contractor is responsible to protect equipment until accepted by owner.

Consult manufacturer's cleaning instructions.

END OF SECTION

VIII. **Bid Offer Form**

Having read all sections of the bid documents, plans, and equipment specifications and familiarized ourselves with the existing conditions which might affect the work, we are pleased to bid as follows on all the work associated with this project as described above.

Base Bid:

Includes all the work described in Scope of Work section above.

\$ _____

Alternate Bid Items:

1. Removal and installation of concrete

\$ _____

2. Install certified playground mulch

\$ _____

CONTRACTOR'S REFERENCES

Below are listed at least five (5) references where we have performed work of a similar nature and scope to that described in this bid.

1. _____

2. _____

3. _____

4. _____

5. _____

Bid form Page 3

DATED THIS _____ day of _____, 2023

Company name of Bidder (print)

- (a) Individual ()
- (b) Partnership ()
- (c) Corporation ()

Full name of Bidder (Signature)

Full name of Bidder (Print)

Official Title

Street Address

City State Zip

Phone Number

Fax Number

E-Mail