

# Fall 2023 GO GUIDE



Registration begins  
August 7, 2023

[belviderepark.org](http://belviderepark.org)



## Table of Contents

<b>PARTY RENTALS.....</b>	<b>3-4</b>
<b>3RD BASE.....</b>	<b>5</b>
<b>PRESCHOOL.....</b>	<b>6</b>
<b>YOUTH DANCE.....</b>	<b>7</b>
<b>YOUTH ATHLETICS.....</b>	<b>8-10</b>
<b>CREATIVE LEARNING.....</b>	<b>11</b>
<b>ADULT FITNESS.....</b>	<b>12</b>
<b>SPECIAL RECREATION.....</b>	<b>13-29</b>
<b>RIVERS EDGE REC CENTER.....</b>	<b>20</b>
<b>SHELTERS AND RENTALS.....</b>	<b>21</b>
<b>PRAIRIE FIELDS/BALTIC MILL.....</b>	<b>22</b>
<b>GENERAL INFORMATION.....</b>	<b>23</b>
<b>MEMORIAL PROGRAM.....</b>	<b>24</b>

## Dear Residents, Park Participants & Visitors!

We are looking forward to the leaves changing colors and kicking off our fun-filled fall activities! Our guide is jam-packed with programs, offerings and parks & playgrounds to visit. Please mark your calendars for September 9th for Up In the Air, one of our most exciting and unique events!

We welcome your feedback and hope you share your thoughts on the Park District with us. We are here to serve the community! We also encourage you to snap and share pictures during your visits to our parks & spaces. We LOVE seeing you enjoy our amenities!

Whether a long-time user or new to us, we want to thank you for being part of the Parks family. We wish you a safe and healthy fall!

*Jen Jacky, Executive Director*

## Current Board of Commissioners

Daniel Noble, President, [dannoble@belviderepark.org](mailto:dannoble@belviderepark.org)  
 Amy Nord, Vice President, [amynord@belviderepark.org](mailto:amynord@belviderepark.org)  
 Mary Marquardt, Secretary, [marymarquardt@belviderepark.org](mailto:marymarquardt@belviderepark.org)  
 Jean Twyning, Treasurer, [jeantwyning@belviderepark.org](mailto:jeantwyning@belviderepark.org)  
 Gary Thacker, Commissioner, [garythacker@belviderepark.org](mailto:garythacker@belviderepark.org)

## Administration Information

**Jen Jacky, Executive Director** - [jjacky@belviderepark.org](mailto:jjacky@belviderepark.org) Ext 100  
**Melissa Merkel, Supt of Admin Services** - [mmerkel@belviderepark.org](mailto:mmerkel@belviderepark.org) Ext 101  
**Aly Graham CPRP, Supt of Recreation** - [agraham@belviderepark.org](mailto:agraham@belviderepark.org) Ext 102  
**Jonathan Cudzewicz, Supt of Parks** - [jcudzewicz@belviderepark.org](mailto:jcudzewicz@belviderepark.org) Ext 103  
**Destiny Boss, HR and Risk Manager** - [dboss@belviderepark.org](mailto:dboss@belviderepark.org) Ext 104  
**Kristi Dummer, Marketing Supervisor** - [kdummer@belviderepark.org](mailto:kdummer@belviderepark.org) Ext 105  
**Katie Inman, Recreation Supervisor** - [kinman@belviderepark.org](mailto:kinman@belviderepark.org) Ext 106  
**Dawn Zenaty, Admin Services Assistant** - [dzenaty@belviderepark.org](mailto:dzenaty@belviderepark.org) Ext 107  
**Jackie Logsdon, Admin Services Assistant** - [jlogsdon@belviderepark.org](mailto:jlogsdon@belviderepark.org) Ext 108  
**Jerri Jimenez, Admin Assistant** - [jjimenez@belviderepark.org](mailto:jjimenez@belviderepark.org) Ext 109  
**Taylor Kuchenreuther, Athletics Supervisor** - [tkuchenreuther@belviderepark.org](mailto:tkuchenreuther@belviderepark.org) Ext 200  
**Katie Humphrey CPRP, Special Recreation Manager** - [khumphrey@belviderepark.org](mailto:khumphrey@belviderepark.org) Ext 600  
**Sean Cramer, Special Recreation Supervisor** - [scramer@belviderepark.org](mailto:scramer@belviderepark.org) Ext 601  
**Gina Ruvalcaba, Special Recreation Supervisor** - [gruvalcaba@belviderepark.org](mailto:gruvalcaba@belviderepark.org) Ext 602  
**Tony Williams, Building Foreman** - [twilliams@belviderepark.org](mailto:twilliams@belviderepark.org) Ext 300

## EASY TO REGISTER!



### 1 ONLINE:

[www.belviderepark.org](http://www.belviderepark.org)

### 2 IN PERSON:

**Rivers Edge Recreation Center**  
**Monday-Friday: 9am-5pm**

**Administration Building**  
 1006 W. Lincoln Avenue  
 Belvidere, IL 61008  
 Phone: 815-547-5711  
 Fax: 815-544-4648  
 M-F: 9am-5pm

### Fall Closings

All Facilities:  
 September 4 (Labor Day)  
 November 11 (Veterans Day)  
 November 23 (Thanksgiving)  
 November 24 (Thanksgiving)

**Rivers Edge Recreation Center**  
 1151 W. Locust Street  
 Belvidere, IL 61008  
 Phone: 815-547-9557

**Registration Hours:**  
 M-F: 9am-5pm

**Building Hours:** M-F:  
 9am-9pm (rentals only);  
 Sat & Sun: by reservation  
 only

**Special Rec Facility**  
 6581 Revlon Drive  
 Belvidere, IL 61008  
 Phone: 815-547-5711 x603

**Registration Hours**  
 M-F: 3:45-6pm

**Fall Registration Hours:**  
 M-F: 3:45pm - 6pm

**Prairie Fields Sports Park**  
 1111 Fairgrounds Road  
 Belvidere, IL

**Riverside Ice Arena**  
 365 W. Locust Street  
 Belvidere, IL 61008  
 (815) 547-5711 x 500

**Baltic Mill**  
 920 W. Lincoln Avenue  
 Belvidere, IL 61008

**Splash Pad**  
 365 W. Locust Street  
 Belvidere, IL 61008

# UP IN THE AIR

SEPTEMBER 9, 2023  
11 AM-3 PM

## OUR PREMIER END-OF-SUMMER CELEBRATION!

A truly fun-filled “day in the park” for the entire family. Where kite-flyers of all types - pros to novice - come together to bring a colorful palette of shapes and sizes dancing in the sky above Prairie Fields.

### FEATURING

- kite flying demos
- inflatable fun
- face painting
- games
- crafts
- food trucks

**Wristbands:** \$20 for unlimited activity (excludes face painting)

**Tickets:** \$1 each (two to four tickets required for activities) or \$20 for 22 tickets



# Special Events



## Chicago Cubs vs Arizona Diamondbacks Game

Join us for a game at Wrigley Field in Chicago! We are heading to see the Cubs take on the Arizona Diamondbacks. The game is scheduled for 1:20pm. Travel is by air-conditioned motor coach. Tickets are limited so register early! (TK)

**Location:** Maintenance Center, 1001 W. Locust St.

**Age:** All, those under 15 must be accompanied by an adult

**Depart:** 9am and will return after the game ends (trip will stay for extra innings) **Max:** 18

Code	R/NR Fee	Date	Time	Day
<u>302037-01</u>	\$105/\$110	9/9	9am	SAT

## Mummy & Me

Grab your favorite Mummy (mom, grandma, aunt, or special someone) and dress in your favorite Halloween costume and come to Rivers Edge Recreation Center for a fun night of games, crafts, and dancing. There will be a costume contest for the best couple, cutest costume and most creative (TK) **Location:** Rivers Edge Rec Center • **Min/Max:** 10/30

Code	Age	R/NR Fee	Date	Time	Day
<u>305075-01</u>	3+	\$35/\$50	10/20	6:30-8:30 pm	FRI
Additional Child:		\$18/\$22			

## Adult Dodgeball Tournament

Can you duck, dip, dive, and dodge? Get your team together for this fun adult dodgeball tournament! All games are played 6 on 6. Minimum of 6 players on a team with a maximum of 8. Double elimination bracket will be played! Winners will be crowned with medals and bragging rights! (TK) **Min/Max:** 4/8 • **Location:** Rivers Edge Rec Center

Code	Age	R/NR Fee	Date	Time	Day
<u>301210-01</u>	18+	\$50/\$65	10/28	9:15 am - 3pm	SAT



## Power Wheels Road Rally

All registered participants will start their evening with "Inspections" where our diesel mechanics will verify that there have been no engine modifications. Once you pass inspection, you will be directed to the PIT until race time. Be sure to bring your "PIT CREW" to cheer you on to victory. Children ages 2-7 are invited to bring their personal Power Wheel and compete in a friendly race! The competition will be divided into two age classes ages, 2-4 and 5-7, competing separately. Trophies will be awarded for 1st, 2nd, and 3rd place for both age classes. Registered Power Wheels must be original stock vehicles with no modified batteries. Helmets are required for participation (TK) **Min/Max:** 10/30 • **Location:** Rivers Edge Rec Center

Code	Age	R/NR Fee	Date	Time	Day
<u>303100-01</u>	2-4	\$10/\$12	9/15	5-6 pm	FRI
<u>303100-02</u>	5-7	\$10/\$12	9/15	6-7 pm	FRI



# 3rd Base After School Program

## Where You Go Before You Go Home!

Third Base is a cooperative after-school recreation program between the Belvidere Park District and School District #100. Caring and trained staff provide a safe, healthy and fun environment for boys and girls in grades K-5. Our goal at Third Base is to encourage an environment of respect, community, fun and safety. Activities include group games, homework time, parties, and arts and crafts. The program operates until 6:00 pm on full days of school. For more information, contact Katie Inman, 815-547-5711 x106 or [kinman@belviderepark.org](mailto:kinman@belviderepark.org) (KI)



- Daily snack time • Closed when school closes due to weather • Scheduled early dismissals are included in daily fees • Care available to all District 100 Elementary schools • Sites are located at each school. Exceptions: **Perry students are bussed to Lincoln, Washington students are bussed to Meehan** • All registration forms in ePACT must be completed and submitted 24 hours before a child may attend • Space is limited and registration is on a first come, first paid basis • In the event of a late pick-up after 6 pm a \$10 per 15 minutes late fee will immediately apply

## 2023-24 3rd Base Registration\*

Registration will be daily; your child must be registered for the week by Wednesday at 11:59 pm prior to the week attending. Your child must be registered and paid in advance to attend the program.

There will be no options for drop-ins. \*\*If school is cancelled due to weather, you will receive a refund. If needed, you will be responsible for registering and paying for any Emergency School Days that are added to the school year, by the Wednesday prior to the week of attendance. The following dates are 2024 Emergency Days if needed/used: May 30– June 6

The registration deadline is Wednesday at 11:59 pm prior to the week of attendance. All registration forms, health history and emergency contact must be completed and submitted before a child may attend. All information will be submitted through our online system – ePACT, at <https://www.epactnetwork.com/login>.

3rd Base is a license-exempt program. The Belvidere Park District follows the guidelines put in place by the Illinois Department of Human Services and accepts requests for childcare assistance from DCFS. Parents/Guardians are responsible for registration fees until the State of Illinois authorizes financial assistance.

## Payment Options

**EFT Billing** – automatic weekly withdrawal from debit/credit card on file.

An Electronic Funds Recurring Authorization Form must be completed and payments will be withdrawn on the Thursday prior to the week attending.

Payment made at time of registration:  
All registration payments are due in full at the time of registration.

## REGISTRATION QUESTIONS?

Contact Recreation Supervisor Katie Inman  
815-547-5711 x106 | [kinman@belviderepark.org](mailto:kinman@belviderepark.org)

**If you need to cancel days, please email reception at [reception@belviderepark.org](mailto:reception@belviderepark.org)**

**Fees: \$17/day, 1st child; \$16/day, 2nd child same family; \$14/day per additional child from same family**

Code	Location	Grade
<a href="#">401807-01</a>	Meehan	K-5
<a href="#">401817-01</a>	Washington (to Meehan)	K-5
<a href="#">401827-01</a>	Lincoln	K-5
<a href="#">401837-01</a>	Caledonia	K-5
<a href="#">401847-01</a>	Seth Whitman	K-5
<a href="#">401867-01</a>	Perry (to Lincoln)	K-5



# Preschool

## 2023-24 Preschool Registration

Registration packets for 2023/2024 Belvidere Park District Preschool are available at Rivers Edge Recreation Center. To register, return the completed registration packet along with a copy of a birth certificate and one month's payment of preschool, which secures your child's place and will be applied as your child's May payment. Monthly EFT payments will be withdrawn on the 1st of every month beginning September 1, 2023. There is a one-time \$35 supply fee. Payment made for the full year at time of registration will receive a 5% discount. (KI)

### Benefits of Attending Preschool

- Activities to develop fine motor strength, identify shapes of letters and begin learning how to write them
- Exposure to letter sounds to develop pre-reading skills
- Exposure and opportunity to gain knowledge in math and science concepts
- Exciting experiences to gain cognitive and motor skills
- Social and emotional growth of being away from their family, as well as trusting and taking direction from teachers
- Learning how to work with and interact with others including taking turns, problem solving and sharing



## Preschool (Ages 3-4)

This introductory preschool class will be exploring their colors, numbers, and letters through manipulative materials, arts & crafts, songs, and games. The focus will be on developing social skills such as sharing, following directions, and consideration of other's feelings. Basic kindergarten readiness skills will also be taught including listening, scissor and writing skills, and the beginning of alphabet and number recognition. **Location:** Administration Office, lower level.

Code	Monthly R/NR Fee	Yearly R/NR Fee	Dates	Time	Day
401800-01	\$129/\$131	\$1,161 / \$1,179	9/5/23-5/9/24	9-11:30am	TU/THR

## Pre-K (Ages 4-5)

This program will build on the basic skills in preparation for kindergarten. Letter and number formation and recognition, writing skills, and building confidence will be the focus. The topics of math, science, and art will continue to be built upon. **Location:** Administration Office, lower level.

Code	Monthly R/NR Fee	Yearly R/NR Fee	Dates	Time	Day
401801-01	\$160/\$162	\$1,440 / \$1,458	9/6/23-5/10/24	9-11:30am	M/W/F



Belvidere Park District

# PRESCHOOL

### Preschool Musts

Preschool will follow the School District #100 calendar. Non-attendance days apply. Please download the rainout line app for closings • Children must be up to date on all immunizations before starting preschool • Children must be toilet trained • Children must be age appropriate by 9/1/23 • This site is a nut free program.

### Cleaning Procedures

Cleaning and disinfecting of the preschool space will be performed daily after class is over.

### Preschool Parent Meet & Greet

Location: Administration Office (Lower Level)  
Preschool Class (3-4 yr olds): Aug. 31, 5:30pm  
Pre-K Class (4-5 yr olds): Aug. 31, 6:30 pm



**Mark Your Calendars!**  
**Graduation - 5/10/24**



# Youth Dance & Programs



## J&J Dance at Rivers Edge

No Classes on 9/4, 12/25 & 1/1



### Creative Movement

This class serves as an introduction to dance where preliminary ballet and tap skills are taught. As our youngest athletes, these children learn how to follow directions, to stand patiently in line and work on counting, shape identification and balance. Athletes in this class also have the opportunity to participate in a recital hosted by J&J! **Shoe Requirements:** Each dancer will need BLACK patent leather tap shoes and PINK ballet shoes • **Additional Fees:** \$70 Costume Fee (billed directly by J&J Dance and Tumbling) • **Min/Max:** 4/20 • **Registration Deadline:** September 25th 2023 (TK)

Code	Age	Monthly R/NR Fee	Dates	Time	Day
<u>301317-01</u>	18 mos - 3 yrs	\$52/\$67	8/21-1/8	5-5:30 PM	MON



### Lyrical/Tap Combination

Through ballet and lyrical styles, students have a higher focus on technique, artistry, story-telling and choreography. These dancers will keep expanding their technique, foundation, ballet, flexibility, and overall awareness of how their body moves. When focusing on tap, students will work on advanced sounds, counting, rhythm and choreography. Athletes in this class also have the opportunity to participate in a recital hosted by J&J! **Shoe Requirements:** Each dancer will need BLACK tie tap shoes, and for lyrical, we dance barefoot. • **Additional Fees:** \$105 Costume Fee (billed directly by J&J Dance and Tumbling) • **Min/Max:** 4/20 • **Registration Deadline:** September 25, 2023 (TK)

Code	Age	Monthly R/NR Fee	Dates	Time	Day
<u>301317-06</u>	10-18	\$60/\$74	8/21-1/8	8-8:45pm	MON

### Jazz/Hip-Hop Combination

In this class, dancers implement basic jazz technique and learn floor skills to create awesome routines. Body awareness, partner work, balance and flexibility are also main focuses. Athletes in this class also have the opportunity to participate in a recital hosted by J&J! **Shoe Requirements:** Each dancer will need BLACK slip-on Jazz shoes • **Additional Fees:** \$80 Costume Fee (billed directly by J&J Dance and Tumbling) • **Min/Max:** 4/20 • **Registration Deadline:** September 25, 2023 (TK)

Code	Age	Monthly R/NR Fee	Dates	Time	Day
<u>301317-04</u>	6-9	\$52/\$67	8/21-1/8	7-7:30 pm	MON
<u>301317-05</u>	10-18	\$52/\$67	8/21-1/8	7:30-8 pm	MON

### Ballet/Tap Combination

Our ballet/tap classes are offered separately for athletes ages 3.5-5 and 6-9. In these classes, instructors work to expand their students' current dance knowledge. These dancers will continue to work on following directions, to stand patiently in line and work on counting, shape identification and balance. Flexibility is a key skill worked on. Athletes in this class also have the opportunity to participate in a recital hosted by J&J! **Shoe Requirements:** Each dancer will need BLACK patent leather tap shoes and PINK ballet shoes • **Additional Fees:** \$80 Costume Fee (billed directly by J&J Dance and Tumbling) • **Min/Max:** 4/20 • **Registration Deadline:** September 25, 2023 (TK)

Code	Age	Monthly R/NR Fee	Dates	Time	Day
<u>301317-02</u>	3.5-5	\$60/\$74	8/21-1/8	5:30-6:15pm	MON
<u>301317-03</u>	6-9	\$60/\$74	8/21-1/8	6:15-7pm	MON



# Youth Athletics

## Kids Spot Youth Tumbling

The Belvidere Park District and Kids Spot Inc. have partnered up to offer high energy tumbling programs. The Kids Spot Inc. has over 20 years of coaching experience and has received numerous regional and national awards. All classes will be held at the Rivers Edge Recreation Center and taught by Kids Spot staff. (TK) **Location:** Rivers Edge Recreation Center

**Tiny Tumblers 1 & 2 (Age 3-5) | Max: 12** - Jump, flip, and roll! This class is perfect for the kids that just love to tumble. Tiny Tumblers focuses exclusively on the fundamentals of tumbling and classroom participation. Through a variety of fun activities your preschooler will learn to cartwheel and roll, listen and follow directions, work independently and cooperate with others. Must be potty trained to participate.

**Beginning Tumbling (Age 6-17) | Max: 8** - Our entry level tumbling class is designed to teach the basic skills and technique needed to safely progress in this dynamic sport. Cartwheels and handstands, power and grace, this exciting class offers 45 minutes of nonstop fun and fitness!

**Novice Tumbling (Age 6-17) | Max: 8** - Mastered the basics? Novice Tumbling class will continue to challenge your tumbler with learning roundoffs, limbering skills, and handsprings. Participants must complete the Beginning Tumbling program and be referred by a coach to participate in the novice class.

## Little Ninjas Tae Kwon Do

This program is specifically designed to help teach 4-to-12-year-olds the important qualities of respect, self control and confidence, while building motor skills and coordination. In addition, children will learn important "stranger danger" and bully drills. The first years are the most important, so start early and give your child the important skills to succeed throughout their lives. Volunteer Instructor: Master Sung Sop An (8th degree black belt) and his black belt staff. The Belvidere Park District does not require your child to purchase any additional equipment to participate. However, if you would like to move up in the rank/belt system, additional equipment, uniform and testing fees may apply via your instructor. (TK) **Location:** Rivers Edge Recreation Center • **Min/Max:** 7/25

Code	Age	R/NR Fee	Dates	Time	Day
<u>306086-01</u>	4-12	\$42/\$57	9/5-10/17	6-6:30pm	TUE
<u>306086-02</u>	4-12	\$42/\$57	10/24-12/5	6-6:30pm	TUE



### Tiny Tumblers

Code	Age	R/NR Fee	Dates	Time	Day
<u>306225-01</u>	3-5	\$62/\$77	9/5-9/26	4:15-5pm	TUE
<u>306225-02</u>	3-5	\$62/\$77	10/3-10/24	4:15-5pm	TUE
<u>306225-03</u>	3-5	\$62/\$77	11/7-11/28	4:15-5pm	TUE
<u>306225-04</u>	3-5	\$47/\$62	12/5-12/19	4:15-5pm	TUE

### Beginning Tumbling

Code	Age	R/NR Fee	Dates	Time	Day
<u>306256-01</u>	6-17	\$62/\$77	9/5-9/26	5-5:45pm	TUE
<u>306256-02</u>	6-17	\$62/\$77	10/3-10/24	5-5:45pm	TUE
<u>306256-03</u>	6-17	\$62/\$77	11/7-11/28	5-5:45pm	TUE
<u>306256-04</u>	6-17	\$47/\$62	12/5-12/19	5-5:45pm	TUE

### Novice Tumbling

Code	Age	R/NR Fee	Dates	Time	Day
<u>306258-01</u>	6-17	\$62/\$77	9/5-9/26	5-5:45pm	TUE
<u>306258-02</u>	6-17	\$62/\$77	10/3-10/24	5-5:45pm	TUE
<u>306258-03</u>	6-17	\$62/\$77	11/7-11/28	5-5:45pm	TUE
<u>306258-04</u>	6-17	\$47/\$62	12/5-12/19	5-5:45pm	TUE





# Youth Athletics

## MAKE A DIFFERENCE!

*Become a volunteer coach*



Call (815) 547-5711 x200  
for more information!

## Small Shots Basketball

Looking for a class to introduce your 5-6 year old to basketball? You've found it! The basic skills of dribbling, passing, shooting & listening will be taught through a variety of creative drills and games that will assist them in improving at their own pace. Teamwork, participation, and good sportsmanship are stressed. Smaller basketballs and lowered baskets will be used to allow each child a positive, successful learning experience. Space is limited; register early! (TK) **Location:** Meehan Gym • **Min/Max:** 5/12

Code	Age	R/NR Fee	Dates	Time	Day
<u>301126-01</u>	5-6	\$36/\$51	10/4-10/25	6:30-7:30 pm	WED
<u>301126-02</u>	5-6	\$36/\$51	10/28-11/18	10-11 am	SAT



## LIL' Pint Hoops

This program is a great start to introducing your 3-4 year old to the game of basketball. Mini basketballs and lowered baskets make this class the perfect introductory class for the future basketball player. Participants will work on dribbling, passing, shooting and listening through fun and creative games and drills. This instructional class will also include the concept of fair play and working together. Space is limited so register early! (TK)

**Location:** Meehan Gym • **Min/Max:** 5/12

Code	Age	R/NR Fee	Dates	Time	Day
<u>301096-01</u>	3-4	\$32/\$47	10/4-10/25	5:30-6:15 pm	WED
<u>301096-02</u>	3-4	\$32/\$47	10/28-11/18	9-9:45 am	SAT



## Youth Basketball Preseason Clinic

Looking for a clinic that will get your child ready for league play basketball? Or just looking for a fun and informative introduction to the sport? BPD Youth Basketball is the class for you! This program is designed for participants to learn and utilize fundamental skills of basketball and put that knowledge towards gameplay. This is a great opportunity for your child to learn new skills and sharpen already learned skills. Participants use smaller balls and lower baskets according to grade level to ensure their success in learning. Space is limited, so register early. Volunteer coaches are welcome! (TK) **Location:** Meehan Gym • **Min/Max:** 5/12

Code	Grade	R/NR Fee	Dates	Time	Day
<u>301166-01</u>	1-2	\$36/\$51	10/7-10/28	9-10 am	SAT
<u>301166-02</u>	1-2	\$36/\$51	11/1-11/29	5:30-6:30 pm	WED
<u>301176-01</u>	3-4	\$36/\$51	10/7-10/28	10:15-11:15 am	SAT
<u>301176-02</u>	3-4	\$36/\$51	11/1-11/29	6:45-7:45 pm	WED

# Youth Athletics & Variety

## Fall Soccer Squirts

This program is designed to teach children the basics of soccer. Dribbling, passing, shooting, and listening skills will be covered through exciting games that keep everyone involved. During this instructional class, participants will develop their skills through drills and practice games! Participants must wear shin guards. Participants will receive a T-shirt and will also receive a medal at the end of the season. Volunteer coaches are needed for this program and are required to fill out a volunteer coach's application that can be found on our website. (TK) **Location:** Prairie Fields Youth Fields • **Min/Max:** 40/80 • **Registration Deadline:** 8/28.

Code	Age	R/NR Fee	Dates	Time	Day
<u>310016-01</u>	3-4	\$39/\$54	9/9-10/21	9-9:45 am	SAT

## Nerf Wars

Nerf War Night is back for the Fall and we are ready to have some fun! The gym is transformed into an awesome battlefield that needs defending! Goggles must be worn and will be provided. No need to bring your ammo, we will have plenty! Bring your own Nerf gun with you to battle! (TK) **Location:** Rivers Edge Rec Center • **Min/Max:** 10/40

Code	Age	R/NR Fee	Dates	Time	Day
<u>301211-01</u>	7-9	\$10/\$15	9/22	6-7 pm	FRI
<u>301211-02</u>	10-13	\$10/\$15	9/22	7:15-8:15 pm	FRI
<u>301211-03</u>	7-9	\$10/\$15	10/27	6-7 pm	FRI
<u>301211-04</u>	10-13	\$10/\$15	10/27	7:15-8:15 pm	FRI



## Youth Soccer League

A great way to involve your child in the sport of soccer while learning the importance of teamwork! Children will participate in games with an emphasis on fun, participation and learning the rules of the game. These concepts will build self-esteem and enhance muscle growth. Games will be played on a reduced-size field and goals for participants aged 5-7 years old. Participants in the 8-10 age group will play on a U10 field size. These age groups will practice once a week on a day determined by the coach, and play games on Saturday mornings. Shin guards and closed-toed athletic shoes are required. All players will receive a jersey and will also receive a medal at the end of the season. Volunteer coaches are needed for this program. (TK) **Location:** Prairie Fields Youth Fields • **Min/Max:** 40/100 • **Registration Deadline:** 8/28

Code	Age	R/NR Fee	Dates	Time	Day
<u>301236-01</u>	5-7	\$49/\$64	9/9-10/21	10-11 am	SAT
<u>301236-02</u>	8-10	\$49/\$64	9/9-10/21	11:15 am -1:30 pm	SAT

## Park Buds

Looking for a way to share a fun learning experience with your child? Would your child like to learn new skills by participating in hands on learning and group activities while learning to share and interact with others? The Park Buds 4-H Clover bud program is a 6-week program where you and your child will work together as we explore topics related to science, healthy lifestyle, environment, personal development, citizenship, and family science (TK) **Min/Max:** 10/20 • **Location:** Rivers Edge Rec Center

Code	Age	R/NR Fee	Dates	Time	Day
<u>303007-01</u>	5-8	\$30/\$38	9/28-11/02	5:30-6:30 pm	THUR



# Creative Learning Center

The Creative Learning Center originally began as the Belvidere Theatre Company. Now it is expanding to serve the community in numerous activities, class, and performance opportunities. Our goal is to connect students with their imagination and give them fun educational opportunities while engaging within the community they live in.

## Musical Theatre: Villains

Bring on the terror as we explore the songs and dances of villains from various musicals and movies throughout time. We'll explore their emotions, motives and how to become the ultimate musical villain! Fee includes materials and instruction. (TK) **Min/Max:** 8/30 • **Location:** Rivers Edge Rec Center • **Instructor:** Natalie Wooden • **Registration Deadline:** September 7th **\*No Class September 7th**

Code	Age	R/NR Fee	Dates	Time	Day
<u>303047-02</u>	7-14	\$135	8/31-11/2	7-7:45 pm	THU

## Little's Music, Movement & Play

Join us for a half hour of social play, games, identifying colors, counting, music, and active movement for your little one! Perfect to burn some energy and encourage movement and socialization among other children. Parents are welcome to participate in class! (TK) **Min/Max:** 6/12 • **Location:** Rivers Edge Rec Center • **Instructor:** Natalie Wooden • **Registration Deadline:** September 7th **\*No Class September 7th**

Code	Age	R/NR Fee	Dates	Time	Day
<u>303049-01</u>	18 mos-3 years	\$120	8/31-11/2	5:15-5:45 pm	THU

## Theatre: Acting & Performance

Come one, come all! Join us for our performers series as we explore acting, blocking, managing stage fright, building a show and performing in front of an audience. Students will walk through the audition process, identify a character, reading and memorize lines, as well as being comfortable performing in front of others! At the end of the session, we'll perform two shows of Lorraine Thomason's "Stories under the Big Top." Fee includes script, shirt, costume, and instruction. (TK) **Location:** Rivers Edge Rec Center • **Instructor:** Natalie Wooden • **Registration Deadline:** September 7th **\*No Class September 7th**

**Tech and Dress rehearsal:** Friday, Nov. 10, from 4-8 PM  
**Show:** Saturday, November 11th at 5:30 and 7 PM

Code	Age	R/NR Fee	Dates	Time	Day
<u>303047-01</u>	7-14	\$175	8/31-11/2	5:50-6:50 pm	THU



## S.T.E.M. SERIES

### Edible Science

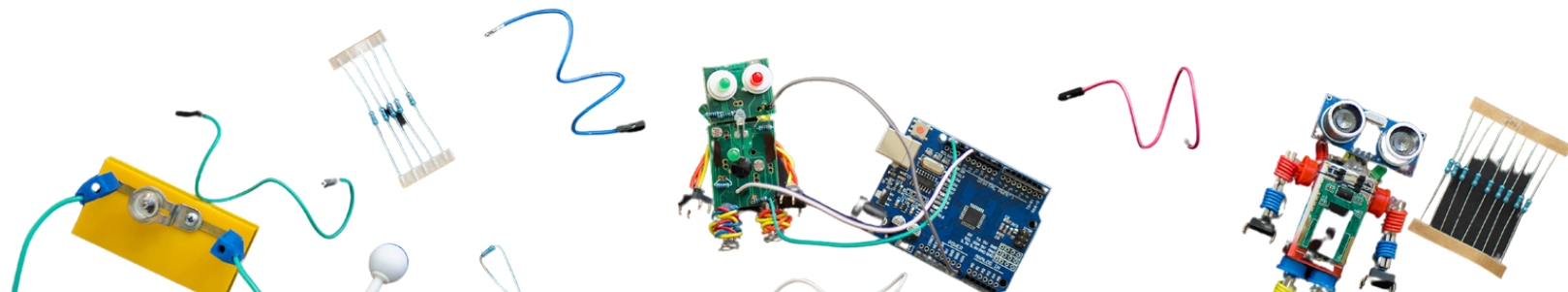
Do you love science? Do you also love to eat? Join us for this unique class where we will explore creating ice cream, rock candy, and other fun foods while seeking out the science behind it! Fee includes materials and instruction. (TK) **Min/Max:** 6/12 • **Location:** Rivers Edge Rec Center • **Instructor:** Natalie Wooden • **Registration Deadline:** September 25th **\*No Class September 13th**

Code	Age	R/NR Fee	Dates	Time	Day
<u>303009-01</u>	6-10	\$175	9/18-10/30	3:15-4 pm	MON

### Team Challenge

Seek out adventure and test your mind with the exploratory S.T.E.M.-based class. We'll build catapults, explore roller coaster science, the infamous egg drop, and much more! Perfect for those who like to problem solve! (TK) **Min/Max:** 6/12 • **Location:** Rivers Edge Rec Center • **Instructor:** Natalie Wooden • **Registration Deadline:** September 25th **\*No Class September 13th**

Code	Age	R/NR Fee	Dates	Time	Day
<u>303011-01</u>	7-12	\$175	9/18-10/30	4:10-4:55 pm	MON



# Adult Fitness

**EDA Classes** - Classes are structured to enhance your everyday activities. For all fitness levels. Modifications are made for injuries and fitness levels. Learn how to strengthen your body from upper body to lower body. This includes cardio, back, core, arms, and legs. Classes are 45-60 minutes long and include warm up, workout, and stretching. **Code:** 302173-01 • **Classes** are: MON-THR 5am, Noon and 5pm; FRI 5am and Noon; SAT 8am. Thursday 12pm and 5pm sessions are cardio kickboxing. • **FEE:** \$80/month; will be auto deducted at the first of every month; \$55/month college students • **Dates:** 9/1-12-30 • **Instructor:** Crystal Soltow

**Low Impact Classes** - No burpees, no push-ups class. Low impact for all fitness levels. Classes include warm-up, workout, and stretching. Low-impact cardio, core and strength. Modifications are made for injuries and fitness levels. This class is for everyone! **Code:** 302173-02 • **Classes** are: MON/WED/THR, 6:15 am and 4:15 pm. • **FEE:** \$45/month; will be auto deducted at the first of every month • **Dates:** 9/1-12/30 • **Instructor:** Cindy Poulter



All PCF classes are held at Rivers Edge Rec Center

## Men's Basketball

Love the game of basketball and want to have some fun during the week? Sign up as an individual and participate in pick up games each week. There are no teams, just show up and play! Pick up games will run every Wednesday evening at the Rivers Edge Rec Center from 7-9 PM. (TK) **Min/Max:** 20/40 • **Location:** Rivers Edge Rec Center

Code	Age	Fee	Dates	Time	Day
<u>302026-01</u>	18+	\$60	10/4-12/20	7-9 pm	WED

## Adult Co-Ed Volleyball

Join us for a co-ed recreational league at Rivers Edge Recreation Center on Monday evenings. There will be an exciting tournament at the end of the season to crown the league champion! All games are officiated. (TK) **Min/Max:** 4/8 • **Location:** Rivers Edge Rec Center

Code	Age	Fee	Dates	Time	Day
<u>302036-01</u>	18+	\$350/team	9/11-12/11	6-10pm	MON

**Hatha Yoga** is an ancient practice of physical well-being which promotes optimum health. Through the use of gentle stretching and deep breathing techniques, yoga tones muscles, increases strength and flexibility, reduces stress, improves concentration, and results in a sense of balance and peace. The atmosphere of the class is quiet and soothing. Students are encouraged to work at their own pace. Wear loose fitting clothing and bring a blanket or mat. (TK) **Location:** Rivers Edge Rec Center • **Min/Max:** 5/20 • **Instructor:** Jeff Leach



## Beginner Yoga

Code	Age	R/NR Fee	Dates	Time	Day
<u>306316-01</u>	16+	\$77	9/21-11/2	5:15-6:30 pm	THU
<u>306316-02</u>	16+	\$77	11/9-12/21	5:15-6:30 pm	THU

## Intermediate/Advanced Yoga

Code	Age	R/NR Fee	Dates	Time	Day
<u>306306-01</u>	16+	\$77	9/19-10/31	5:30-6:45 pm	TUE
<u>306306-02</u>	16+	\$77	11/7-12/19	5:30-6:45 pm	TUE



# Special Recreation - Special Events

## Fancy Night Out

Looking for an occasion to dress up? Look no further! Join us for a fancy night out to Prairie St. Brewing Co! (GR) **Min/Max:** 6/12 • **Location:** Prairie St. Brewing Co • **Transportation:** Depart/Return Special Recreation Facility • **Register By:** 10/2

Code	Age	Fee	Dates	Time	Day
<u>309421-01</u>	18+	\$65	10/6	5-8:30 pm	FRI



## Apple Orchard Tours

It's apple picking season! We'll head out to Stade's Farm & Market to enjoy the annual Fall Festival and pick some apples. Next stop, Curran's Apple Orchard for a hayride, learn about the importance of bees and pick some more apples. Lunch, 1/4 peck of apples and activities are included in the fee. Bring spending money if you plan on purchasing more. (GR) **Min/Max:** 4/15 • **Transportation:** Depart/Return Special Recreation Facility

Code	Age	Fee	Dates	Location	Time	Day	Register By:
<u>309333-01</u>	12+	\$65	9/17	Stade's Farm	10:30 am-3:30 pm	SUN	9/11
<u>309333-02</u>	12+	\$50	10/15	Curran's Orchard	11 am-3 pm	SUN	10/9

## Halloween Bash

Calling all ghouls and goblins! Grab your best costume and come party with us! Join us for pizza, salad and dessert! We will have a craft, dancing, and an opportunity to take a polaroid picture! Please note, costumes and festive wear is encouraged, but not required for this bash! (GR) **Min/Max:** 10/30 • **Location:** Special Recreation Facility • **Transportation:** NONE • **Register By:** 10/30

Code	Age	Fee	Dates	Time	Day
<u>309203-01</u>	13+	\$25	10/28	6-8 pm	SAT

## Friendsgiving

Join us for a Thanksgiving celebration with your friends! We will be having a mac n cheese, mashed potato and turkey breast dinner. We will also have pie for dessert, a craft, a polaroid picture, and dancing! (GR) **Min/Max:** 10/30 • **Location:** Special Recreation Facility • **Transportation:** NONE • **Register By:** 11/13

Code	Age	Fee	Dates	Time	Day
<u>309203-02</u>	13+	\$25	11/18	6-8 pm	SAT

## Hollywood Palms & Shopping

Join us as we are heading to the Hollywood Palms Cinema to enjoy lunch & a movie and ending our day shopping! Bring money and a list for shopping. (GR) **Min/Max:** 6/12 • **Location:** Hollywood Palms, Aurora • **Transportation:** Depart/Return Special Recreation Facility • **Register By:** 12/4

Code	Age	Fee	Dates	Time	Day
<u>309212-01</u>	16+	\$70	12/9	9 am-5 pm	SAT



# CLUB HORIZON: 2023-24 SCHOOL YEAR

Club Horizon is all the fun of summer camp, but all the practicality and reliability of an after-school option. This program provides your child with fun and reliable care. Kids will participate in games, crafts, snacks, and have opportunities to be active after a long day at school. The program is based on the District #100 school calendar/schedule and will NOT BE HELD when the district is not in session.

All participants must complete updated participant-specific information via ePACT prior to starting in the program. (SC)

Club Horizon will not be held on the following District #100 no-school dates: 9/4, 10/6, 10/09, 11/10, 11/22-11/24, 12/22-1/5, 1/15, 2/16, 2/19, 3/25-3/29, 5/27

**Min/Max:** 8/20 • **Location:** Special Recreation facility • **Transportation:** NONE; you MUST pre-arrange transportation from the school to our facility prior to attending. • **Age:** 5-21 • **Time:** 2pm-6pm • **Days:** M-F • **Register by:** Wednesday at 11:59pm prior to the following week of attendance.



Code	Ages	R/NR Fee	Times	Dates	Days
<u><a href="#">309747-02</a></u>	5-21	\$17*/day	After school - 6pm	2023/2024 District #100 School Year	M-F

*\*Discount available for multiple children; including those attending 3rd Base. Early dismissals are included in the fee.*

## No School Camp

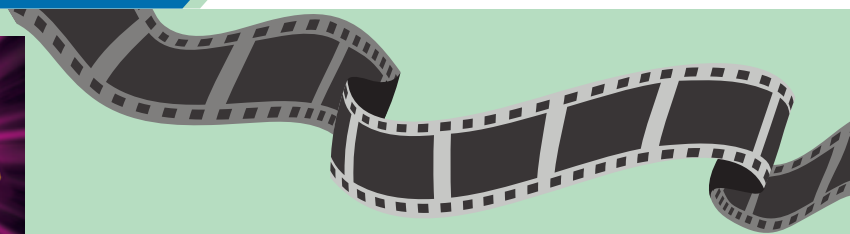
A day off from school is a perfect time to get a taste of Camp Horizon for the first time or all over again! Our school's out programs give your child a safe environment with trained staff who will provide hours of programming, including games, crafts, special treats, experiments, and more. Themes this year will center on season-related activities and the group will spend plenty of time outside, including an offsite trip as conditions allow. Please bring sack lunch and drink each day; we will provide an afternoon snack. **Min/Max:** 8/20 • **Location:** Special Recreation facility • **Transportation:** NONE • **Age:** 5-21

Code	Ages	R/NR Fee	Times	Dates	Theme	Trip	Register By
<u><a href="#">309717-01</a></u>	5-21	\$36	7 am-6 pm	10/6	Colors of Fall	Playgrounds	9/27
<u><a href="#">309717-02</a></u>	5-21	\$36	7 am-6 pm	10/9	Farmyard Fun	Apple Orchard	10/4
<u><a href="#">309717-03</a></u>	5-21	\$36	7 am-6 pm	11/10	Patriotic Play	Fire Station	11/1





# Special Recreation - Theatre Productions



## Little Shop of Horrors

Little Shop of Horrors is a wild ride filled with some of the catchiest songs including "Suddenly Seymour" and "Supertime". But remember DON'T FEED THE PLANTS! (GR)

**Min/Max:** 8/12 • **Location:** Paramount Theatre, Aurora • **Transportation:** Depart/Return Special Recreation Facility • **Register by:** 9/1

Code	Age	Fee	Dates	Time	Day
<u>309204-01</u>	16+	\$75	9/10	8:30 am-5:30 pm	SUN

## Charlie & The Chocolate Factory

This fantastical musical follows young Charlie Bucket and his Grandpa Joe as they join four other Golden Ticket winners to tour the magical and mysterious chocolate factory of eccentric "Candy Man" Willy Wonka. (GR)

**Min/Max:** 8/12 • **Location:** Paramount Theatre, Aurora • **Transportation:** Depart/Return Special Recreation Facility • **Register by:** 11/27

Code	Age	Fee	Dates	Time	Day
<u>309204-02</u>	13+	\$75	12/10	8:30 am-5:30 pm	SUN

## Special Rec Theatre Co.

Come join us for our production of Annie! We will be rehearsing our lines once a week in preparation for the show. Got stage fright? No problem! We need a backstage crew to help with costumes, backgrounds, set up, and more! **No practice on 11/22.** Theatre performance will be on Friday, 12/15, at the Special Recreation Facility. **Min/Max:** 8/10 • **Location:** Special Recreation Facility • **Transportation:** NONE



Code	Age	Fee	Dates	Time	Day	Register By:
<u>309415-01</u>	8+	\$85	10/4-12/13	6-8 pm	WED	9/27

## New Horizons Rummage Sale

Our Fall Rummage sale is back, September 7th-9th. Thursday/Friday: 9am-4pm; Saturday: 8am-12pm. Mark your calendar and spread the word to help make our bi-annual fundraiser a great success! New Horizons participants are preparing for this sale and are actively accepting donations. All proceeds help offset activities and materials needed for the program. Please contact Sean Cramer to set up an appointment for donation drop-off at 815-547-5711 x601 or [scramer@belviderepark.org](mailto:scramer@belviderepark.org). Drop-off Address: 6581 Revlon Drive. DROP OFFS WILL NOT BE ACCEPTED WITHOUT APPOINTMENT – please do not leave donations in the lobby unattended. (SC)

## ASK ABOUT OUR INCLUSION SERVICES

We invite people of all ages with disabilities to participate in programs noted throughout this GO GUIDE. Our Special Recreation team will work, within reasonable accommodation, to assist any resident who would like to participate. When registering, please indicate your specific needs. Once registered, and with 2 weeks advance notice, you will be contacted by Special Recreation staff to conduct a participant intake assessment to determine placement needs or accommodations. If you have any questions regarding Inclusion Services, please contact Katie Humphrey at 547-5711 x600 or at [khumphrey@belviderepark.org](mailto:khumphrey@belviderepark.org).



# Special Recreation - Special Olympics

## Basketball

Athletes will learn the fundamentals of the game, teamwork, and sportsmanship. Focus will be on individual skills and team play, but divided by age and ability. Individual Skills practice for 8 weeks and compete at the Region A Tournament on January 13th. Teams will also practice for 14 weeks, spending more time working on team skills before the Region A Tournament on January 27th and in practice games throughout the season. A tentative schedule will be distributed on the first night of practice. Teams or Individuals who receive a gold medal at the Region A Tournament will advance to the State Tournament in March. If teams do not reach the minimum, they will be combined based on age and ability. **\*No practice on 11/21 and 12/26 (GR)** • **Location:** Rivers Edge Rec Center • **Transportation:** NONE; provide to/from games and tournaments. • **Min/Max:** Individual Skills = 2/10 Per Team = 8/15

Code	Age	Fee	Dates	Time	Day	Register By:
<a href="#">309502-01</a>	8+	\$65*	11/7-1/9	6-7pm	TUE	11/2
<a href="#">309502-02</a>	8-15	\$80*	10/10-1/23	6-7pm	TUE	10/5
<a href="#">309502-03</a>	14-22	\$80*	10/10-1/23	7:15-8:45 pm	TUE	10/5
<a href="#">309502-04</a>	15+	\$80*	10/10-1/23	7:15-8:45 pm	TUE	10/5



## Polar Plunge Team

Take the plunge with the pirates! This year we will be forming a team of plungers! Friends, athletes, and family are all welcome to participate! Everyone will be responsible for raising their own funds - a minimum \$100 per participant. The program fee includes a team t-shirt. More plunge specifics to come! (GR) **Location:** Olson Lake at Rock Cut State Park, Loves Park • **Transportation:** Depart/Return Special Recreation • **Register By:** 12/8

Code	Age	Fee	Dates	Time	Day
<a href="#">309530-01</a>	8+	\$18	3/2/24	TBD	SAT

## Snowshoe



Athletes can choose from a variety of distances and relays to compete in during Region A tourney in Mendota in December. Practices focus on how to use snowshoes (we provide or you supply), conditioning with shoes on and distance you will compete in. Athletes who receive a gold medal at Regionals will advance to Winter Games held in Galena in February 2024.

Practices will be held outdoors, except during extreme weather. Please dress appropriately. **\*No practice on 11/25 (GR)** **Location:** Glen Green Open Space • **Transportation:** NONE; Provided to and from tournament • **Register By:** 9/26

Code	Age	Fee	Dates	Time	Day
<a href="#">309507-01</a>	8+	\$65*	9/30-12/2	9-10 am	SAT

## Pirates in the Parade

Calling all Special Olympic Pirate athletes! It's time for the Hometown Christmas Parade. Join us as the community celebrates the holidays and wear your SO medals (not required)! Please dress weather appropriate. Athletes can ride on the Special Recreation bus or walk alongside as the parade progresses. You will be contacted a few days prior with meeting location and time. (GR) **Min/Max:** 4/15 • **Location:** Downtown Belvidere • **Transportation:** NONE - will be contacted with meeting location. • **Register By:** 11/27

Code	Age	Fee	Dates	Time	Day
<a href="#">309515-01</a>	8+	FREE	12/1	TBD	FRI

## Franchesco's Luncheon

It's a wonderful time of year for the annual Special Olympics Franchesco's Luncheon! Athletes will be treated to a pizza, pasta, and salad lunch with presents given by a special visitor. Register now for event, but the date is still to be determined by Special Olympics. Medical Applications MUST be valid through 12/31/23. (KH) **Min/Max:** 5/20 • **Location:** Franchesco's, Rockford • **Transportation:** Depart/Return Special Recreation Facility • **Register By:** 10/27

Code	Age	Fee	Dates	Time	Day
<a href="#">309516-01</a>	8+	FREE	TBD	10:30am - 1:30pm	TBD

\*The fee for participating in Special Olympics Basketball and Snowshoeing is charged by the Belvidere Park District to help offset the expenses related to running the programs. Special Olympics Illinois does not charge athletes to participate in competitions.



# Special Recreation - Weekly & Monthly Programs



## Floral Creations

Join us to learn and explore how to create your own floral bouquets or floral centerpieces! Just in time for the holidays!

(GR) **Min/Max:** 4/10 • **Location:** Special Recreation Facility • **Transportation:** NONE

Code	Age	Fee	Dates	Time	Day	Register by
<a href="#">309334-01</a>	8+	\$25	9/28	6-7:30 pm	THU	9/25
<a href="#">309334-02</a>	8+	\$25	10/9	6-7:30 pm	MON	10/6
<a href="#">309334-03</a>	8+	\$25	11/20	6-7:30 pm	MON	11/17
<a href="#">309334-04</a>	8+	\$25	12/4	6-7:30 pm	MOM	12/1

## Karaoke Night

Put on your favorite outfit and get ready to sing and party with your friends! The night will be filled with karaoke, refreshments, and fun! (GR) **Min/Max:** 6/20 • **Location:** Special Recreation Facility • **Transportation:** NONE

Code	Age	Fee	Dates	Time	Day	Register by
<a href="#">309336-01</a>	12+	\$15	9/21	6-7:30pm	THU	9/18
<a href="#">309336-02</a>	12+	\$15	10/26	6-7:30pm	THU	10/23
<a href="#">309336-03</a>	12+	\$15	11/30	6-7:30pm	THU	11/27

## Diners Club

Take a break from those ordinary home-cooked meals and see what Boone County and the Rockford area have to offer! We will visit some great restaurants, taste fabulous food, and socialize with friends. Transportation & staff are included in the fee.

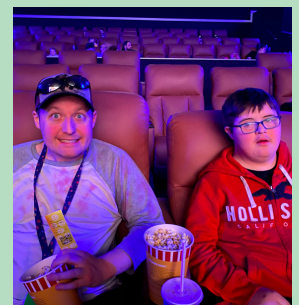
**\*Please bring money for meal, drink, tax, and tip.\*** (GR) **Min/Max:** 6/10 • **Location:** See below • **Transportation:** Depart/Return Special Recreation Facility.

Code	Restaurant	Age	Fee	Dates	Time	Day	Register by
<a href="#">309411-01</a>	Denny's	15+	\$20	9/7	6-8:30pm	THU	9/4
<a href="#">309411-02</a>	Machine Shed	15+	\$20	10/12	6-8:30pm	THU	10/9
<a href="#">309411-03</a>	Applebee's	15+	\$20	11/9	6-8:30pm	THU	11/6
<a href="#">309411-04</a>	Coaches Corner	15+	\$20	12/7	6-8:30pm	THU	12/4

## 2 Thumbs Up

Join your friends as you catch the latest movie, while reclining in heated seats at Classic Cinemas, which will not be rated higher than PG-13. Fee includes door-to-door transportation (Belvidere Township residents only with a pick up point at Candlewick's West Gate), staff supervision, ticket, and small popcorn & drink. Movie and pick up/drop off time will be emailed on the Tuesday before each movie date. Times are approximate and subject to change based on theater movie times and availability. (GR) **Min/Max:** 4/15 • **Location:** Classic Cinemas, Beloit, WI • **Transportation:** Door-to-door

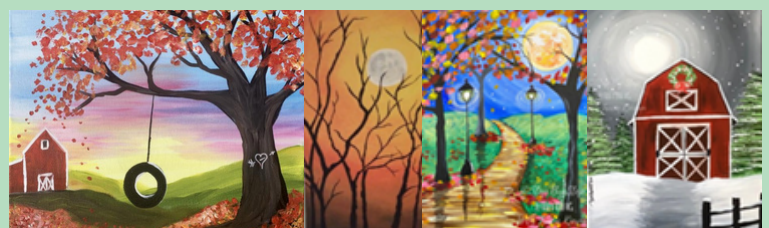
Code	Age	Fee	Dates	Time	Day	Register by
<a href="#">309412-01</a>	15+	\$38	9/14	5-10 pm	THU	9/11
<a href="#">309412-02</a>	15+	\$38	10/19	5-10 pm	THU	10/16
<a href="#">309412-03</a>	15+	\$38	11/16	5-10 pm	THU	11/13
<a href="#">309412-04</a>	15+	\$38	12/14	5-10 pm	THU	12/11



## Canvas & Cola

Are you interested in creating a beautiful work of art, but looking for some guidance? Canvas & Cola gives step-by-step instructions to create a beautiful painting. Enjoy light snacks and drink of choice while creating your masterpiece. (GR) **Min/Max:** 4/15 • **Location:** Special Recreation Facility • **Transportation:** NONE

Code	Painting Titles	Age	Fee	Dates	Time	Day	Register by
<a href="#">309311-01</a>	Tire Swing	12+	\$25	9/15	6-8pm	FRI	9/12
<a href="#">309311-02</a>	Sunset & Trees	8+	\$25	10/27	6-8pm	FRI	10/24
<a href="#">309311-03</a>	Moonlight	8+	\$25	11/17	6-8pm	FRI	11/14
<a href="#">309311-04</a>	Winter Barn	8+	\$25	12/20	6-8pm	WED	12/17



# Special Recreation - Weekly & Monthly Programs



## REGISTER NOW!

Don't miss out on the fun! Please register for all of the programs you would like to participate in **before the registration deadline**. For the consistency, quality, and benefit of everyone involved, minimum/maximum participation numbers have been established. We must adhere to these numbers and registration deadlines. Register for all of your favorite Special Recreation Programs at once and pay as you go! All programs **MUST** be paid for by the registration deadline. Or call Katie Humphrey at 815-547-5711 x600 to set up a payment plan.

## Pajama Bingo

Put on your most comfortable clothes or pajamas and head over to the Special Recreation Facility! Enjoy an epic evening of bingo and prizes with your friends. (GR) **Min/Max:** 4/15 • **Location:** Special Recreation Facility • **Transportation:** None

Code	Age	Fee	Dates	Time	Day	Register by
<a href="#"><u>309318-01</u></a>	12+	\$15	9/8	6-7:30 pm	FRI	9/5
<a href="#"><u>309318-02</u></a>	12+	\$15	10/13	6-7:30 pm	FRI	10/10
<a href="#"><u>309318-03</u></a>	12+	\$15	11/10	6-7:30 pm	FRI	11/7
<a href="#"><u>309318-04</u></a>	12+	\$15	12/8	6-7:30 pm	FRI	12/5



## Bake & Take

Hold onto your mixers! Let's bake some sweet treats! Join us to make and try new delicious desserts! We will have a pre-made batch of the recipe for you to try while your treat bakes, then you get to take your treat home! (GR) **Min/Max:** 4/15 • **Location:** Special Recreation Facility • **Transportation:** None

Code	Bakes	Age	Fee	Dates	Time	Day	Register by
<a href="#"><u>309317-01</u></a>	Simplified Cake Pops	8+	\$27	9/25	6-8pm	MON	9/18
<a href="#"><u>309317-02</u></a>	Spooky Strawberry Cheesecake	8+	\$27	10/23	6-8pm	MON	10/16
<a href="#"><u>309317-03</u></a>	Apple Crumble	8+	\$27	11/6	6-8pm	MON	10/30
<a href="#"><u>309317-04</u></a>	Holiday Sugar Cookies	8+	\$27	12/18	6-8pm	MON	12/11

## Movement & Meditation

Join us on Mondays! We will be going through different activities that will help keep us active during the cold months! (GR) **Min/Max:** 4/10 • **Location:** Special Recreation Facility • **Transportation:** NONE

Code	Age	Activity	R/NR Fee	Date	Time	Day	Register by
<a href="#"><u>309616-01</u></a>	13+	Yoga & Meditation	\$15	9/11	6-7 pm	MON	9/4
<a href="#"><u>309616-02</u></a>	13+	Just Dance Movement	\$15	10/16	6-7 pm	MON	10/9
<a href="#"><u>309616-03</u></a>	13+	Beginner Cardio	\$15	11/13	6-7 pm	MON	11/6
<a href="#"><u>309616-04</u></a>	13+	Weights & Yoga	\$15	12/11	6-7 pm	MON	12/4

## Spa Saturday

Join us for some Saturday pampering. Learn how to make some self care products each month! We will be making shower melts, face masks, bath bombs, and body lotion. (GR) **Min/Max:** 4/15 • **Location:** Special Recreation Facility • **Transportation:** NONE

Code	Item	Age	Fee	Dates	Time	Day	Register by
<a href="#"><u>309429-01</u></a>	Shower Melts	16+	\$20	9/23	10am-12pm	SAT	9/15
<a href="#"><u>309429-02</u></a>	Face Mask	16+	\$20	10/7	10am-12pm	SAT	9/29
<a href="#"><u>309429-03</u></a>	Bath Bomb	16+	\$20	11/11	10am-12pm	SAT	11/3
<a href="#"><u>309429-04</u></a>	Body Lotion	16+	\$20	12/16	10am-12pm	SAT	12/8



# Special Recreation - Adult Day Trips

## Batting & Lunch

Join us to bat on the field at the ABC Stadium in Beloit, WI followed by lunch in the dugout! (GR) **Min/Max:** 4/10 • **Location:** ABC Stadium, Beloit, WI • **Transportation:** Depart/Return Special Recreation Facility • **Register by:** 9/4



Code	Age	Fee	Dates	Time	Day
<u>309403-01</u>	18+	\$65	9/18	9:15 am-5 pm	MON

## Ice Hogs & Portillo's

LET'S GO HOGS! Come along for an Ice Hogs game and lunch at Portillo's! (GR) **Min/Max:** 4/10 • **Location:** Rockford • **Transportation:** Depart/Return Special Recreation Facility • **Register by:** 10/30



Code	Age	Fee	Dates	Time	Day
<u>309403-04</u>	18+	\$50	11/8	10 am-3 pm	WED



## Shedd Aquarium

Join us for a trip to the aquarium to explore all the sea life the Shedd Aquarium has to offer (GR) **Min/Max:** 4/10 • **Location:** Shedd Aquarium, Chicago • **Transportation:** Depart/Return Special Recreation Facility • **Register by:** 9/18

Code	Age	Fee	Dates	Time	Day
<u>309403-02</u>	18+	\$65	10/2	8 am-5 pm	MON



## NORTHLANDS ASSOCIATION FOR SPECIAL RECREATION

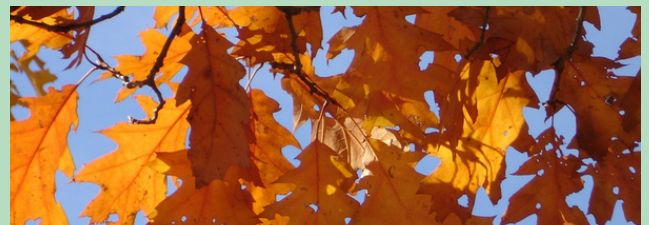
Northlands Association for Special Recreation (NASR) is a cooperative partnership between the Belvidere, Freeport, and Rockford Park Districts (referred to as member district). NASR programs are open to any individual with disability-related special needs such as physical, mental and developmental disabilities and persons with mental illness, behavior disorders and visual or hearing impairments.

Member district residents are invited to participate in specialty/therapeutic (TR) programs offered through any member district at the resident rate. Participation in Inclusion Services at a member district other than your own member district, you must pay the non-resident rate for that specific program.

## NASR Fall Fun Day

Hey NASR friends! Let's enjoy the fall weather and changing leaves by spending our day outdoors! We will be cooking hotdogs over an open fire, doing a nature walk, playing games, doing crafts, and so much more! (KH) **Min/Max:** 6/20 • **Location:** Oakdale Nature Preserve, Freeport • **Transportation:** Depart/Return Special Recreation Facility • **Register by:** 9/5

Code	Age	Fee	Dates	Time	Day
<u>309020-01</u>	8+	\$20	9/16	10 am-2 pm	SAT



**Belvidere Park District**  
Special Recreation Department  
[www.belviderepark.org](http://www.belviderepark.org)  
815-547-5711

**Freeport Park District**  
Special Recreation Department  
[www.freeportparkdistrict.org](http://www.freeportparkdistrict.org)  
815-568-6114

**Rockford Park District**  
Therapeutic Recreation Department  
[www.rockfordparkdistrict.org](http://www.rockfordparkdistrict.org)  
815-987-8800

# Rivers Edge Recreation Center



1151 W. Locust St.,  
Belvidere, IL 61008  
(815) 547-9557

Registration hours:  
Monday-Friday, 9AM-5 PM

## Open Pickleball

Monday-Fridays 9am-12pm (starting 8/14) and Friday nights 7-9pm (Starting 8/18) **Drop-In Fee: \$3**  
Purchase a Pickleball Pass that is good for one year from the date of purchase. **Pass Fee: \$60**

## Open Volleyball

Thursdays 6:15-9:15 pm open volleyball **Drop-In Fee: \$3**

## Indoor Batting Cage

Need to get a few swings in before the big game or secure a regular time in the off-season? Reserve your dates and times now for your baseball or softball team. Reservations are on a first-come first-paid basis. Reservations must be made for a 1-hour minimum. For more details, call the Rivers Edge Recreation Center at (815) 547-9557. **Fee: \$50 per hour**

## Climbing Wall

**Drop-in fees:** \$3/15 minutes; \$15 unlimited climb. **Rental fee:** \$75/hour; accommodates up to 30 people. Drop in Monday-Thursday 5-8 PM.

## Room & Gymnasium Rentals

If you need a room or gym space for your special occasion, look no further than the Rivers Edge Recreation Center. We have 4 different multi-purpose rooms, a service kitchen and an air-conditioned gymnasium. Each multi-purpose room holds a maximum of 48 people or combine two rooms for 96 people. Tables and chairs are provided. For more information to rent for your special day, call (815) 547-9557. All COVID policies and regulations will be followed. Renter is required to wipe down chairs, tables and counters. Tables and chairs must be properly stored. Garbage must be in cans, floors swept and all decorations removed. \*Set Up / Take Down Fee – (\$25.00) Staff will set up tables and chairs as pre-requested by renter. Renter must place all garbage in cans and remove all decorations. Staff will clean and store tables and chairs, sweep, mop the floors and empty garbage cans.

Room	Capacity	Fee/Hour	*Set-up/ Take down fee
Multi-purpose room w/Kitchen	1-48	\$50	\$25
Multi-purpose room, No Kitchen	1-48	\$40	\$25
2 Multi-purpose rooms, combined	96 max	\$75	\$25
Half Gym	NA	\$50	NA
Full Gym	NA	\$80	NA \$25 set up fee for volleyball equipment

## Outdoor Bocce Courts

Bocce courts located at the Rivers Edge Rec. Center. Both courts are ADA-accessible. Bocce sets are available to rent for \$5 per use with valid ID. Please call ahead for availability at (815) 547-9557.





## Shelter Rentals

**9am-2pm \$30; 3-9pm \$30 All Day rental \$50**

**Aberdeen Shelter:** capacity 100; 1343 Orth Road

**Bloom Shelter:** capacity 30; Belvidere Park, 1006 W. Lincoln Ave.

**Cottonwood Shelter:** capacity 100; Belvidere Park, 1001 W. Locust St.

**Doty Shelter:** capacity 60; Doty Park, 365 W. Locust St.

**Fridh Shelter:** capacity 100; Fridh Park, 1420 9th St.

**Kiddieland Shelter:** capacity 100; Belvidere Park, 1006 W. Lincoln Ave.

**Prairie Fields Shelter/Green:** capacity 150; 1111 Fairgrounds Rd.

**Prairie Fields Shelter/Red:** capacity 150; 1111 Fairgrounds Rd.

**Whispering Pines Shelter** (\$15 half-day, \$25 full-day); capacity 100; 1006 W Lincoln Ave.

**Sugar Maple Shelter** (\$15 half-day, \$25 full-day); capacity 100; 1006 Lincoln Ave.



## Sundstrand Park Shelter Rentals

**All Day rentals only: \$100 (9am-9pm)**

Sundstrand Park • 2288 Newburg Road

**North Shelter:** capacity 100

**South Shelter:** capacity 150

**West Shelter:** capacity 250

*\* All shelter rentals require a 72-hour notice.*

## Parks/Facilities

**Aberdeen Park** • 1343 Orth Road

**Administration Building** • 1006 W. Lincoln Avenue

**Baltic Mill** • 920 W. Lincoln Avenue

**Belvidere Park** • 1006 W. Lincoln Avenue

**Bob's Park** • 524 E. Locust Street

**Doty Park** • 365 W. Locust Street

**Fridh Park** • 1420 9th Street

**Glenn Green Open Space** • 8484 Distillery Road

**Harkless Park** • 918 W. 918 9th Street

**Hickory Bills Island Canoe Launch** • 113 S. Appleton

**Road Maintenance Facility** • 6573 Revlon Drive

**Meehan Elementary Gym** • 1401 E. 6th Street

**Prairie Fields** • 1111 Fairgrounds Road

**Red Horse Bend Canoe Launch** • 6301 Lawrenceville Rd

**Rivers Edge Recreation Center** • 1151 W. Locust Street

**Special Recreation Facility** • 6581 Revlon Drive

**Sundstrand Park** • 2100 Newburg Road

**Tot Lot** • 1022 E. Avenue

**Winterroth Park** • 2143 E. 6th Street

**NERF**  
**Birthday Parties**

Now here's a Birthday Party idea that's a Blast of Fun! Rent out our Rivers Edge Rec Center and throw a Nerf Birthday Party. We'll set up an obstacle course and provide the ammo; you bring your own nerf guns. It will be a birthday bash long remembered! Contact [tkuchenreuther@belviderepark.org](mailto:tkuchenreuther@belviderepark.org) for more details and reservations. (TK)

**Time:** 90 minutes  
**Number of attendees:** 10 children  
**Location:** Rivers Edge Rec Center  
**Max Capacity:** 18 children  
**Fees:** \$120/resident; \$150/non-resident (additional participants can be added for \$12 each) Fee includes four (4) pizzas, gym for one hour, and party room for 30 minutes.

# Prairie Fields/ Baltic Mill

Prairie Fields Sports Park is a sports facility within a park and is located on 90 acres of land south of the Boone County Fairgrounds. This innovative park provides a wide variety of amenities for families, community groups, seniors and sports teams of all ages and interests. Prairie Fields welcomes adults and children to participate in their favorite outdoor activities within a beautiful park setting.



Field	Fee
Soccer Fields #1 - #5	\$25 per hour
Soccer Fields #6 and #7	FREE: first come, first reserved
Softball Field	\$25 per hour
Baseball Field	\$25 per hour

## Prairie Fields Field Rentals

The Prairie Fields Sports Park houses four full-size and one U10 soccer field, one Junior football field (no goal posts), one baseball and one softball field to rent for your team or organization. There are also two practice soccer fields that are available to the public. Field reservations can be made at the Rivers Edge Recreation Center located at 1151 W. Locust Street, Belvidere, IL or at [belviderepark.org](http://belviderepark.org). Fields are reserved on a first-come-first-paid basis. Depending on weather conditions, fields will typically be available to rent until mid-November. For more information, call (815) 547-9557 x200

## Baltic Mill

Owned and operated by the Belvidere Park District, the Baltic Mill event space is perfect for your unique outdoor celebration. The beauty of nature will surround you during the months of May through October, in a relaxing, natural fashion as the symphony of flowers and calming green beds provide the perfect backdrop for your outdoor wedding. The tranquil flow of the Mill Race will soothe and delight your senses. Have your memorable wedding ceremony performed on the Baltic Mill stage. The seating area features natural limestone rock for hillside seating. The Baltic Mill Conference Room provides a comfortable meeting space or preparation room for your special day. Complimentary parking is available throughout Belvidere Park and on Lincoln Avenue for your guests. Call 815-547-5711 x200 for full details.



The Baltic Mill, built in 1845, is rich with history and remains a cornerstone of the Belvidere Park District. Renovated and modernized, it remains beautiful, rustic and quaintly nestled amongst trees, the river, beautiful greenery and nature itself. Call Taylor Kuchenreuther at 815-547-5711 x200 or email [tkuchenreuther@belviderepark.org](mailto:tkuchenreuther@belviderepark.org) to get rental information and rates.



# General Information

## Board Meetings

Board meetings are held the second and fourth Tuesdays of the month at 5:00 p.m. at the Baltic Mill Annex in Belvidere Park - 920 W. Lincoln Ave.

## Park Hours

Park property hours are 6:00am to 10:00pm unless a Park District-sponsored program is taking place.

## Gift Cards

Purchase gift cards at the Rivers Edge Recreation Center. Gift cards may be used for the Riverside Ice Arena and other programs. They make the perfect gift!

## Behavior Management Policy

All participants are expected to exhibit appropriate behavior at all times. The following guidelines have been developed to help make children's programs safe and enjoyable for all participants. Additional rules may be developed for specific programs as deemed necessary by staff. The Park District insists that all participants comply with a basic behavior code. All participants shall:

- Show respect to all participants, staff, and volunteers. Participants should follow program rules and take direction from staff.
- Refrain from using abusive or foul language.
- Refrain from threatening or causing bodily harm to self, other participants, or staff.
- Show respect for equipment, supplies and facilities.
- Not possess any weapons.

A positive approach will be used regarding discipline. Staff will periodically review rules with participants during the program session. If inappropriate behavior occurs, a prompt resolution will be sought specifically to each individual's situation. The Park District reserves the right to dismiss a participant whose behavior endangers his or her own safety or the safety of others. Upon registration or entry into the program, the parent/guardian should be solicited for any information regarding special accommodations needed for the participant. If any of these special accommodations are behavior related, the behavior medication programs in place at school or home. Attempts should be made to utilize these in the program. Also, Special Recreation should be contacted for guidance. Documentation should be maintained regarding any problem behaviors, special accommodations, and behavior modification programs.

## Cell Phone Use

The use of cell phones in Park District restrooms or locker rooms is strictly prohibited.

## Parks and Conservation Foundation

Do you find yourself looking for a reputable charity to donate money? Are you wishing Belvidere had more park land? Are you tired of seeing subdivision after subdivision being built? The Parks and Conservation Foundation may be just what you're looking for. Established in 1992, the Parks and Conservation Foundation's mission is to assist the Belvidere Park District and the Boone County Conservation District to acquire and develop land. To date, the Parks and Conservation Foundation holds title to over 1 million dollars worth of land through grants. Please consider a donation of money to the Foundation's general fund. Since the Parks and Conservation Foundation has a 501 (C)(3) status, all gifts are tax deductible.

## Firearms Concealed and Carry Act

Passed July, 2013, forbids carrying a concealed weapon into governmental buildings and parks, which includes all Belvidere Park District facilities and parks. When you enter our facilities and parks, you will see signs posted at the entrances that are approved by the Illinois State Police to remind all patrons of the law.

## Park Ordinances

All ordinances can be found at [belviderepark.org](http://belviderepark.org).

## Resident/Non-Resident Fee Policy

Belvidere Park District residents make significant contributions to the operation of the district through their property taxes. This contribution is beyond the program and service fees. Those patrons living outside the boundaries are required to pay the non-resident (NR) fee to equalize fee structures where applicable. Residents in the Belvidere Park District boundaries receive discounted resident program rates. Non-residents may register for programs for a fee that is 50% higher than the resident fee or \$15 over the resident fee, whichever is the smaller amount with the following exceptions: NASR programs, 3rd Base After School Care, facility/shelter rentals, field rentals, contracted trips, adult athletic team league fees, tournaments and daily admissions. Individuals registering for a class that requires parent (adult) and child participation if one of the participants resides in the Belvidere Park District boundaries, the resident fee will be charged.

## The Belvidere Park District boundaries are:

North Boundary: South side of Orth Road • South Boundary: U.S. 20 by-pass West Boundary: Winnebago/Boone County line • East Boundary: Poplar Grove Rd. \*Also included in the district boundaries are Farmington Fields, Wycliffe, Aderdeen Knolls and Oakbrook Woods subdivisions.

## Disc Golf Course

Belvidere's disc golf course is located in Belvidere Park. This 9-hole course is nestled throughout the park among mature trees and is fun for beginners and a challenge for experts. For a course map, visit our website at [belviderepark.org](http://belviderepark.org) or stop in at the Administration Office or Rivers Edge Recreation Center to pick one up.

## Picnic Shelters

In various park locations, are available to rent, April through October. Shelter reservations must be accompanied by a reservation form and shelter payment. Please see page 21 for shelter locations. For more information, please call (815) 547-9557. Or reserve a shelter at [belviderepark.org](http://belviderepark.org)

## No Smoking / Vaping Policy

Please comply with the no smoking/vaping policy. Smoking/vaping stations are placed near facilities for your use. Please be considerate of others and the environment and use these stations.

## Memorial Programs & Tree Reforestation Program

Prairie Fields Sports Park Benches/Doty Park Benches • Memorial Trees  
The Belvidere Park District provides options a living memorial for friends and family. For additional information on all of our memorial programs, contact (815) 547-5711 x103.

## Photo Policy

The Belvidere Park District photographs and videotapes program participants. By using our facilities, registering for a program or involvement with an activity/event, the participant consents to use by the Belvidere Park District of her/his likeness in Park District promotions and other uses.

## Bilingual Interpreter

The Belvidere Park District strives to meet the needs of our diverse community. We will provide a bilingual interpreter for program and activity information with an appointment. Currently, the office staff is not bilingual.

## Other

Alcohol is prohibited on all Park District property. For the safety of your pets and others, please keep your pet on a leash at all times and clean up after your pet. Observe speed limits. Put waste in its place and use recycling containers. Snowmobiling, off-road and all-terrain vehicles are prohibited on Park District property. All District Ordinances can be found at [belviderepark.org/aboutus](http://belviderepark.org/aboutus).

## Americans with Disabilities Act

Belvidere Park District welcomes the opportunity to assist people with disabilities. If you need any accommodation due to a disability, please contact the Administration office at (815) 547-5711 ext. 600.





1006 W. Lincoln Ave.  
Belvidere, IL 61008  
815-547-5711

\*\*\*\*\*ECRWSEDDM\*\*\*\*\*

LOCAL  
POSTAL CUSTOMER

Prsrt Mkt  
U.S. Postage  
Paid  
Columbus, WI  
Permit No. 73

## MEMORIAL BENCH & TREE PROGRAM

The Belvidere Park District invites all to honor departed family members and friends through the planting of a memorial tree or bench in a public park or along the trail.

For more information, please contact Jonathan Cudzewicz, Superintendent of Parks, 815-547-5711 x103 or [jcudzewicz@belviderepark.org](mailto:jcudzewicz@belviderepark.org)



## Leaving your employer? Understand your 401(k) options.

At Edward Jones, we can explain options for your 401(k), including leaving the money in your former employer's plan, moving it to your new employer's plan, rolling it over to an Individual Retirement Account (IRA) or cashing out the account subject to tax consequences.

To learn more, call today.



**Eric R Dahl, AAMS®**  
Financial Advisor  
907 Alexandra Dr  
Belvidere, IL 61008  
815-544-5984

[edwardjones.com](http://edwardjones.com)  
Member SIPC

**Edward Jones®**  
MAKING SENSE OF INVESTING